

DRC

PZ23-12000001  
04/03/2024

IMTIAZ AHMED, P.E.  
LICENSED ENGINEER NO. 46102  
STATE OF FLORIDA

Digitally signed  
by Imtiaz  
Ahmed  
Date: 2024.02.07  
08:23:24 -05'00'

SEAL

NEW 3 UNIT RESIDENCE  
1300 N. RIVERSIDE DR  
POMPANO BEACH, FLORIDA

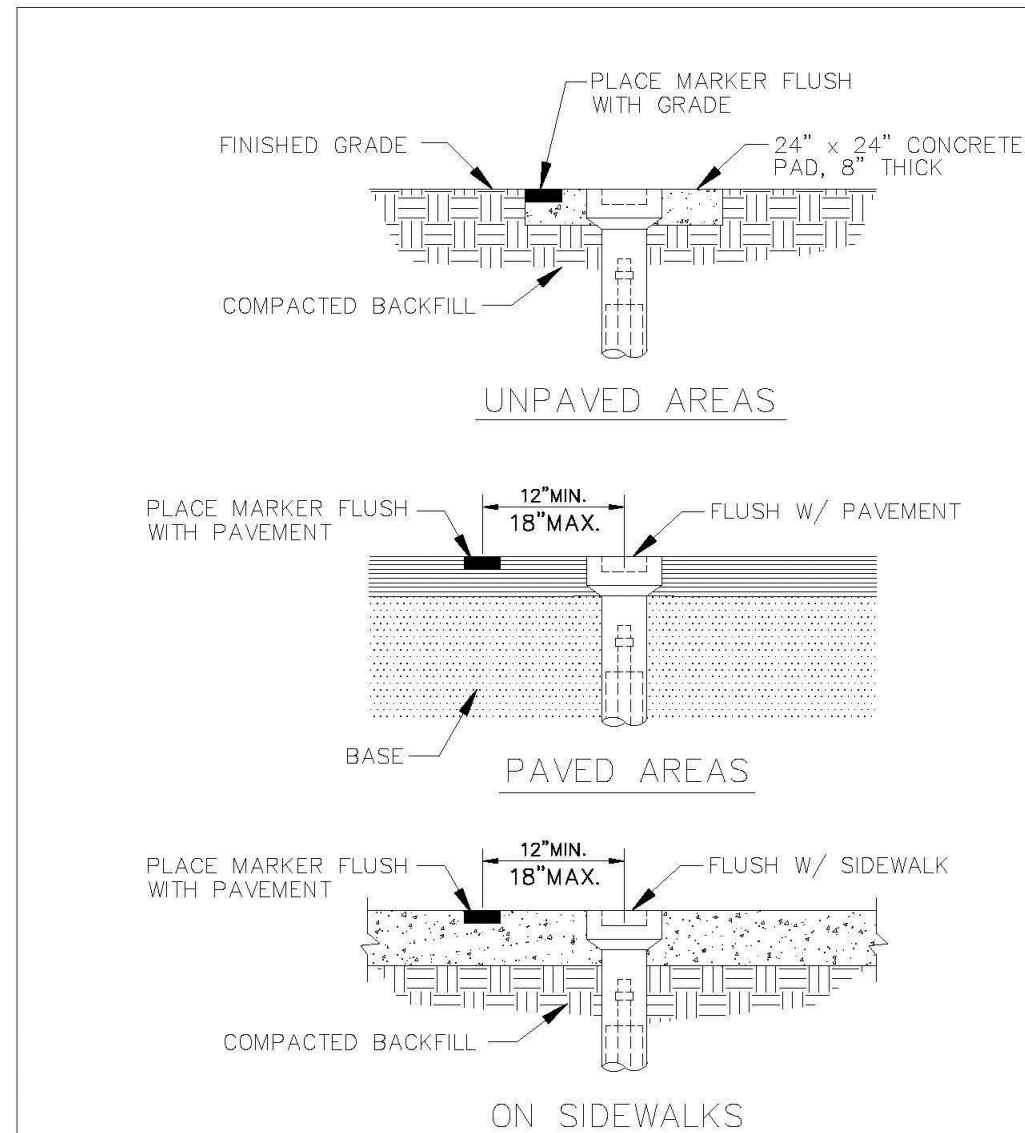
ATLANTIC ENGINEERING SERVICES, INC.

2822 WATERS EDGE CIRCLE  
GREENACRES, FLORIDA 33413  
PHONE - (561) 358-4140  
FAX - (561) 966-9242  
CERTIFICATE OF AUTHORIZATION NO.: 9390

PROJ. NO. 0001  
SCALE: 1"=10'

DES. DWN. CHK.  
SHEET NUMBER  
CE3  
DATE DRAWN  
JAN, 2023

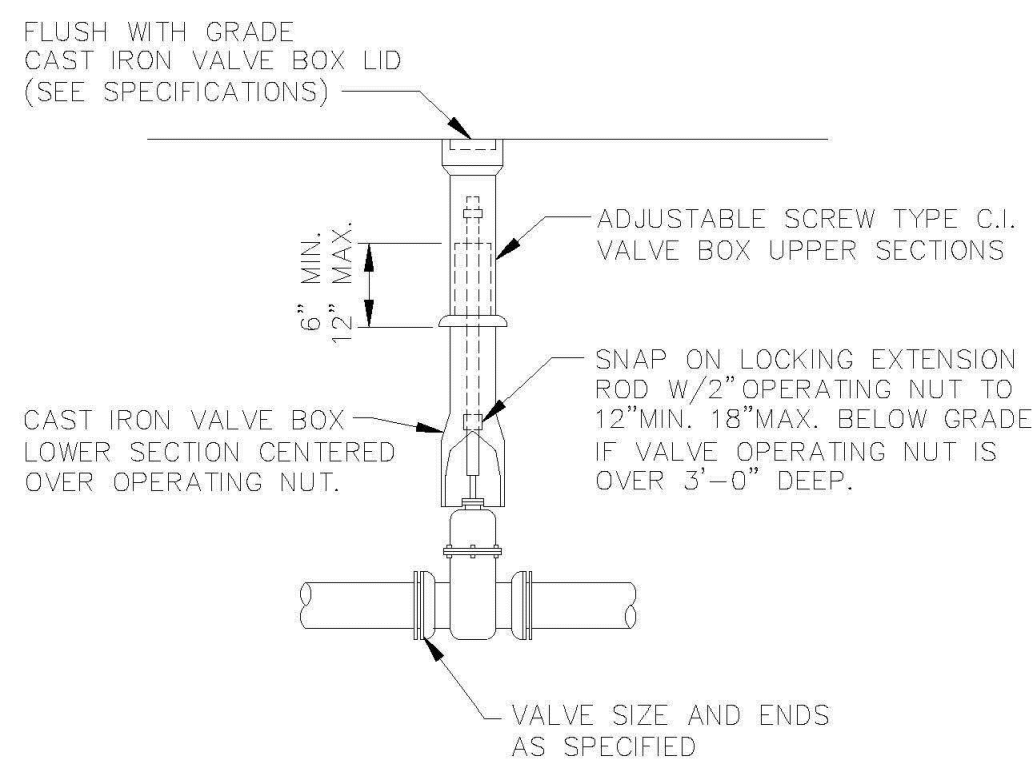
WATER AND SEWER DETAILS



### VALVE BOX SETTINGS

#### ENGINEERING STANDARDS 2022

REVISIONS	ENGINEERING DIVISION	VALVE BOX SETTINGS
BY DATE	CITY OF POMPAÑO BEACH	
S.S. 04-2005		DATE: MAY 2022
		DWG. NO. 102-1
	SCALE: N.T.S.	



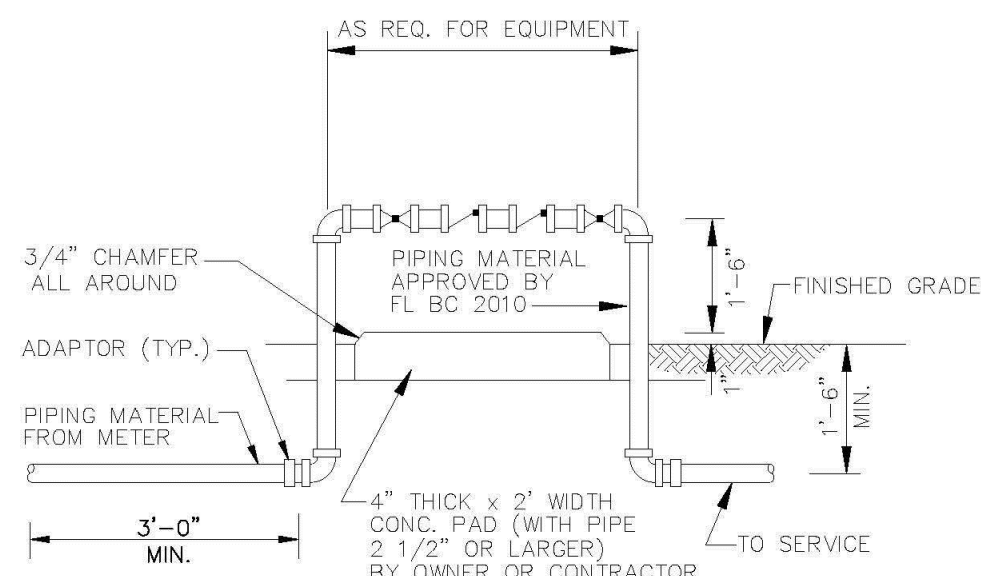
### GATE OR PLUG VALVE SETTING

USE MEGALUGS AT ALL PIPE JOINTS

ALL D.I.P. TO BE PAINTED  
BLUE ON TOP HALF OF PIPE.

#### ENGINEERING STANDARDS 2022

REVISIONS	ENGINEERING DIVISION	GATE OR PLUG VALVE SETTINGS
BY DATE	CITY OF POMPAÑO BEACH	
S.S. 04-2005		DATE: MAY 2022
T.W. 11-2007		DWG. NO. 103-1
	SCALE: N.T.S.	

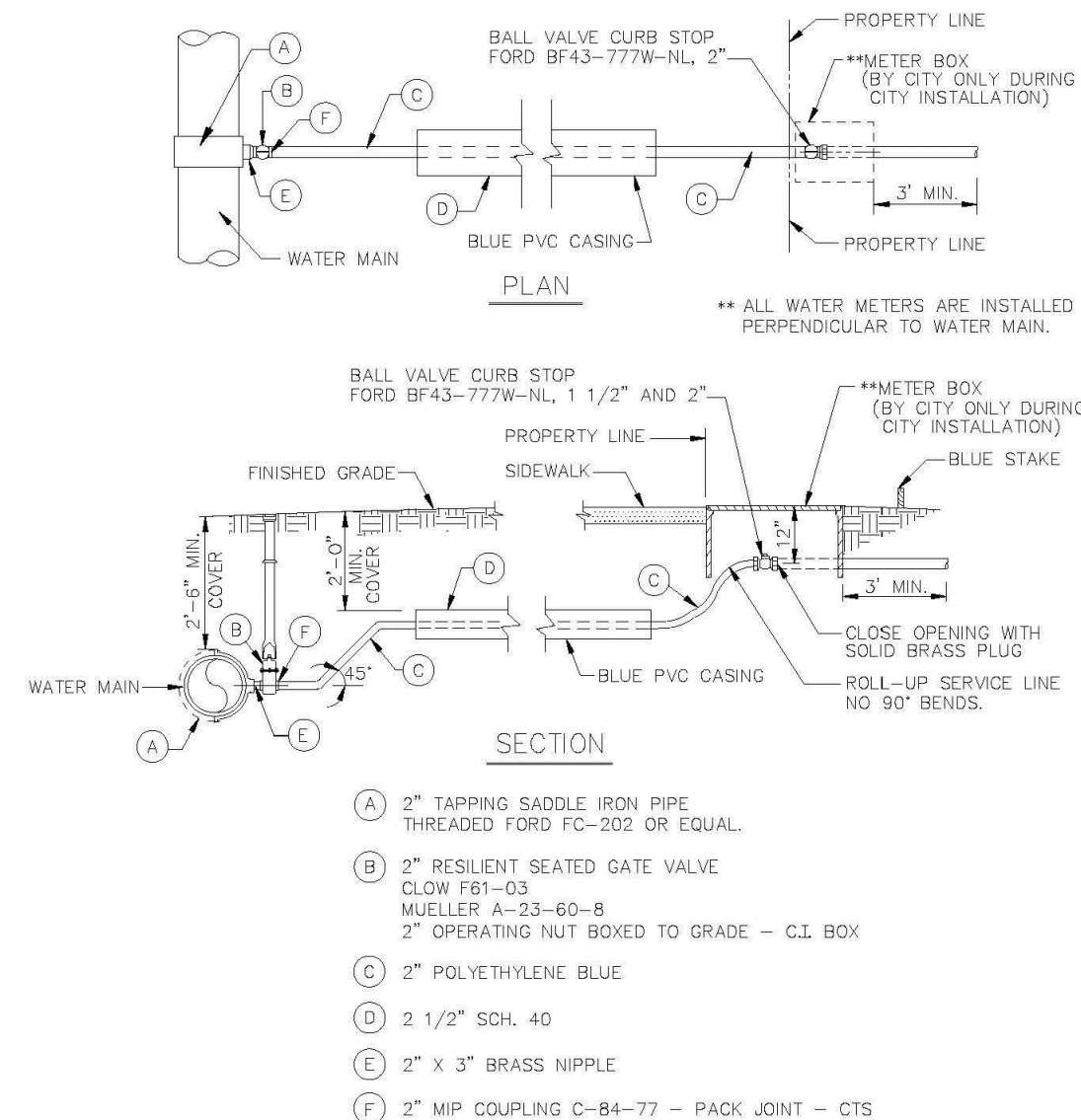


### BACKFLOW PREVENTER

USE MEGALUGS AT ALL PIPE JOINTS 3" AND LARGER  
PLEASE SEE METER INSTALL DIMENSION LIST ON STANDARD NO. 106-4  
SMALL UNITS UNI-STRUT SUPPORT

#### ENGINEERING STANDARDS 2022

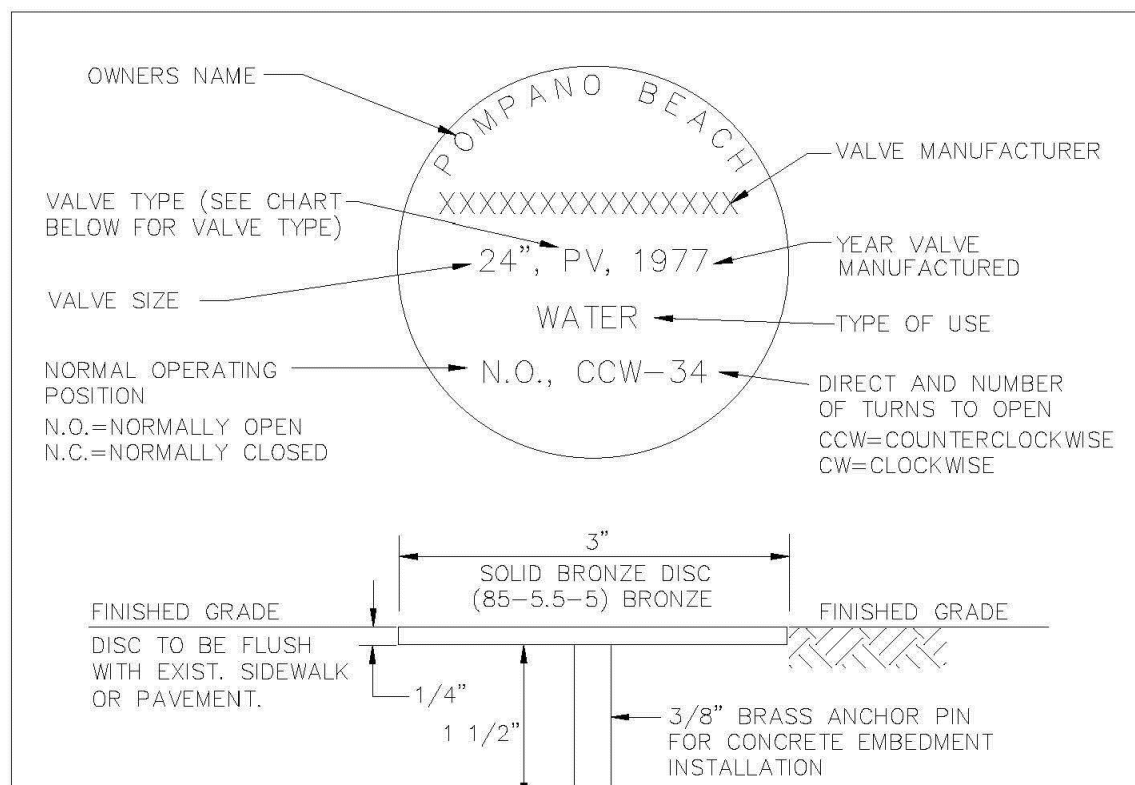
REVISIONS	ENGINEERING DIVISION	BACKFLOW PREVENTER
BY DATE	CITY OF POMPAÑO BEACH	
T.W. 04-2008		DATE: MAY 2022
S.S. 03-2009		DWG. NO. 106-1
S.S. 11-2012		
S.S. 01-2013	SCALE: N.T.S.	



### TYPICAL 1 1/2" AND 2" WATER SERVICE

#### ENGINEERING STANDARDS 2022

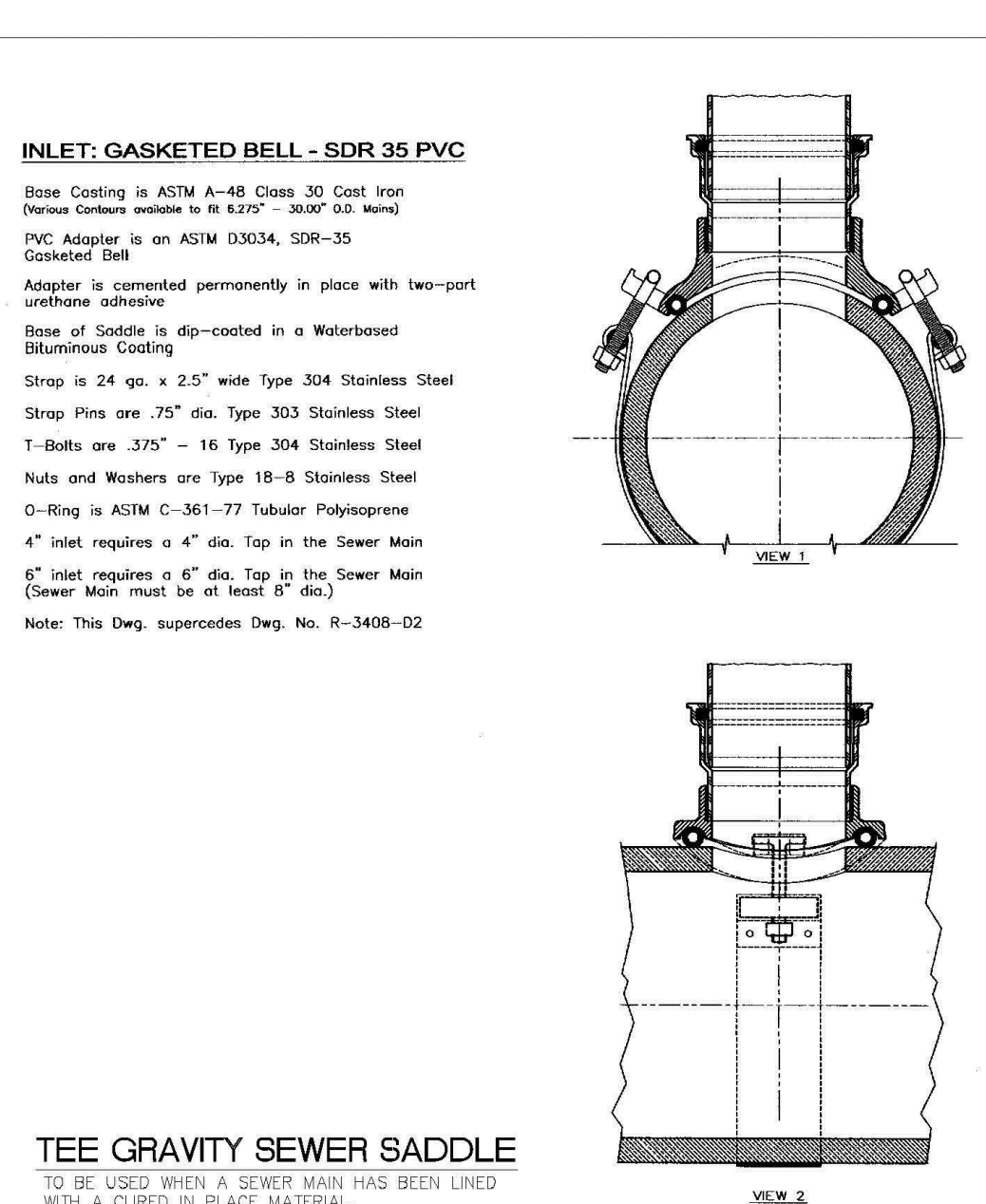
REVISIONS	ENGINEERING DIVISION	TYPICAL 2" WATER SERVICE
BY DATE	CITY OF POMPAÑO BEACH	
S.S. 08-2011		DATE: APRIL 2022
S.S. 09-2012		DWG. NO. 107-2
S.S. 11-2018		
A.S. 08-2021	SCALE: N.T.S.	



### UNDERGROUND VALVE IDENTIFICATION MARKER

#### ENGINEERING STANDARDS 2022

REVISIONS	ENGINEERING DIVISION	UNDERGROUND VALVE IDENTIFICATION MARKER
BY DATE	CITY OF POMPAÑO BEACH	
S.S. 04-2005		DATE: FEB. 2022
T.W. 11-2007		DWG. NO. 115-1
T.W. 02-2008		
S.S. 1-24-12	SCALE: N.T.S.	



### TEE GRAVITY SEWER SADDLE

TO BE USED WHEN A SEWER MAIN HAS BEEN LINED  
WITH A CURED IN PLACE MATERIAL.

#### ENGINEERING STANDARDS 2022

REVISIONS	ENGINEERING DIVISION	TEE GRAVITY SEWER SADDLE
BY DATE	CITY OF POMPAÑO BEACH	
S.S. 11/23/16		DATE: MAY 2022
		DWG. NO. 201-1
	SCALE: N.T.S.	

### INLET: GASKETED BELL - SDR-35 PVC

Base Coating is ASTM A-48 Class 30 Cast Iron (Dewar Coatings available in R-6.05" - 30.07" O.D. Range)  
PVC Adaptor is on ASTM D3034, SDR-35 Gasketed Bell  
Coatings and Adaptor cemented permanently in place with two-part urethane adhesive  
Base of Saddle dip-coated in Waterbased Blumhouse Coating  
Strap is 24 ga. x 2.5" wide Type 304 Stainless Steel  
Strap Pins are .75" dia. Type 303 Stainless Steel  
T-Bolts are .375" - 16 Type 304 Stainless Steel  
Nuts and Washers are Type 18-8 Stainless Steel  
G-Ring is ASTM C-361-77 Tubular Polyisoprene  
4" inlet requires a 4" x 6.50" oval top in the Sewer Main  
6" inlet requires a 6" x 8.25" oval top in the Sewer Main (Sewer Main must be at least 8" dia.)  
Note: This Dwg. supercedes Dwg. No. R-3157-01

### WYE GRAVITY SEWER SADDLE

TO BE USED WHEN A SEWER MAIN HAS BEEN LINED  
WITH A CURED IN PLACE MATERIAL.

#### ENGINEERING STANDARDS 2022

REVISIONS	ENGINEERING DIVISION	WYE GRAVITY SEWER SADDLE
BY DATE	CITY OF POMPAÑO BEACH	
		DATE: MAY 2022
		DWG. NO. 201-2
	SCALE: N.T.S.	

### Adjustable Repair Coupling

#### NOTES

- Synthetic rubber gasket is strong, durable and resilient to ultraviolet rays, ozone, fungus growth and normal sewer gases. More pliable and easier to install in cold weather applications than an Elastomeric PVC gasket.
- Sealing "O" rings under the clamp prevent pipe slippage and create a more positive seal.
- More transition couplings for dissimilar pipe types and sizes are comprised of a one-piece transition gasket, eliminating the use of bushings that are difficult to install and easy to lose on the job site.
- Surgical Grade 316 stainless steel Nut & Bolt clamps are corrosion resistant, providing outstanding protection in severe environments such as marine applications, poorly aerated or moist soils, contaminated ground conditions (particularly industrial fill sites) and where the ground water contains chloride, sulfates or bicarbonates. Increased band tension of the Nut & Bolt clamp ensures a leak-proof, root-proof seal that is resistant to both infiltration and exfiltration.
- Series 300 stainless steel shear band is the heaviest in the industry, over 33% thicker than the competition.
- Broadest range of couplings on the market in sizes ranging from 1 1/2" to 96" in diameter. Used for the alteration and rehabilitation of gravity-flow sewage pipes made of clay, cast iron, plastic, concrete, ductile iron, asbestos cement, fiber cement and truss pipe.

**Specification:**  
Furnish and install stainless steel shielded sewer couplings, as manufactured by Mission Rubber Company. Coupling to meet ASTM C 1173. Gasket to meet ASTM C 425 Table 2, to be rubber and be environmentally certified. Series 300 stainless steel shear band with a minimum thickness of .012", surgical grade 316 stainless steel clamps with nut & bolt take up, shear ring and clamps to meet all requirements of ASTM A 240. All stainless steel parts and clamping mechanisms to be manufactured in the U.S.A. Transitional sizes to utilize a one piece gasket.

### ADJUSTABLE REPAIR COUPLING PVC/CLAY NOTES

#### ENGINEERING STANDARDS 2022

REVISIONS	ENGINEERING DIVISION	ADJUSTABLE REPAIR COUPLING
BY DATE	CITY OF POMPAÑO BEACH	
		DATE: MAY 2022
		DWG. NO. 202-1
	SCALE: N.T.S.	